



ARTIST RENDERING OF THE ASBURY III DUPLEX

THE ASBURY III

The Asbury III as pictured includes optional window grills and shutters. The optional high pitched roof and dormer are complimented by full eave returns, shakes, decorative vent and porch. The panelized garage and porch roof are optional and site installed. The garage door is site provided and installed.

**THE ASBURY III
DUPLEX
27'-6" X 54'-0"**

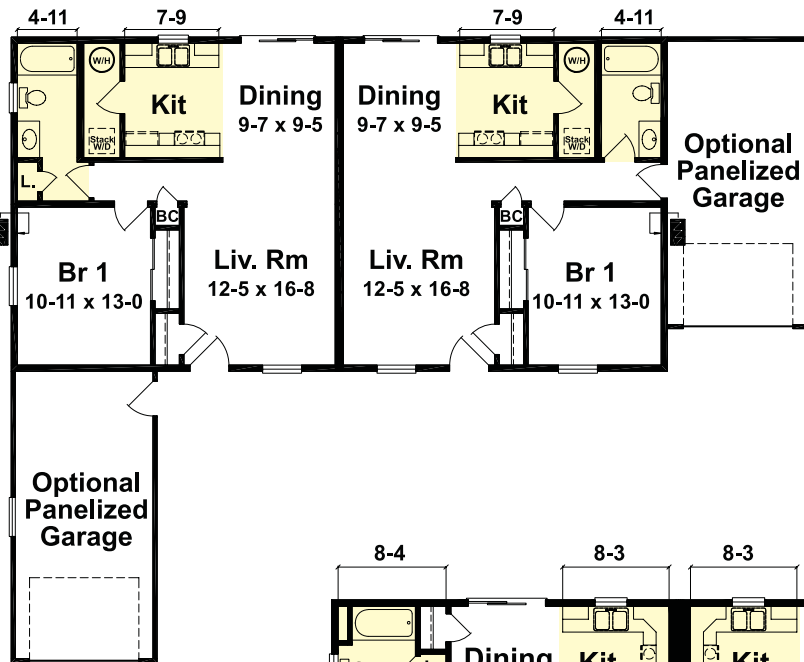
743 SQ. FT. 1BR
per dwelling 1 BATH

**THE ASBURY IV
DUPLEX
26'-0"/26'-9" X 54'-0"**

717 SQ. FT. 1BR
per dwelling 1 BATH

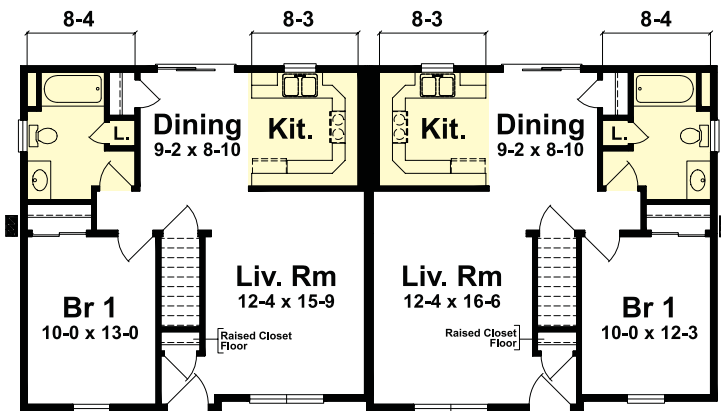
DESIGNED FOR FULL
BASEMENT OR CRAWL
SPACE FOUNDATION

SIMPLEX INDUSTRIES INC.
KEYSER VALLEY INDUSTRIAL PARK
1 SIMPLEX DRIVE
SCRANTON, PA 18504
(570) 346.5113
www.simplexhomes.com



ASBURY III

ASBURY IV

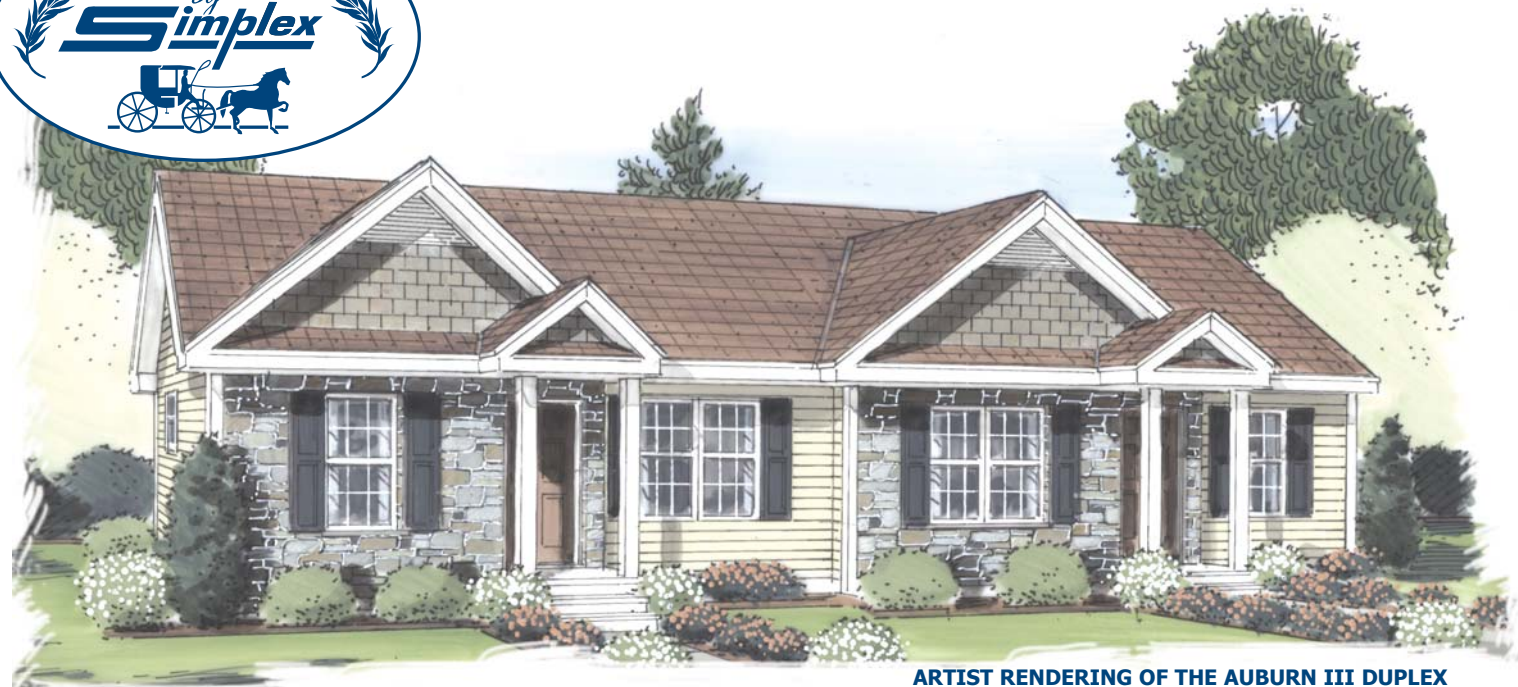


= linoleum areas



MULTI-FAMILY DIVISION

DUPLEX PLAN RANCH



ARTIST RENDERING OF THE AUBURN III DUPLEX

THE AUBURN III

The Auburn III as pictured includes optional window grills and shutters, high pitched roof with shakes, decorative vent, full eave return and porch. The large decorative dormer is included. The stonework and porch are site supplied and installed.

THE AUBURN III DUPLEX
 26'-0" / 26'-9" X 58'-0"

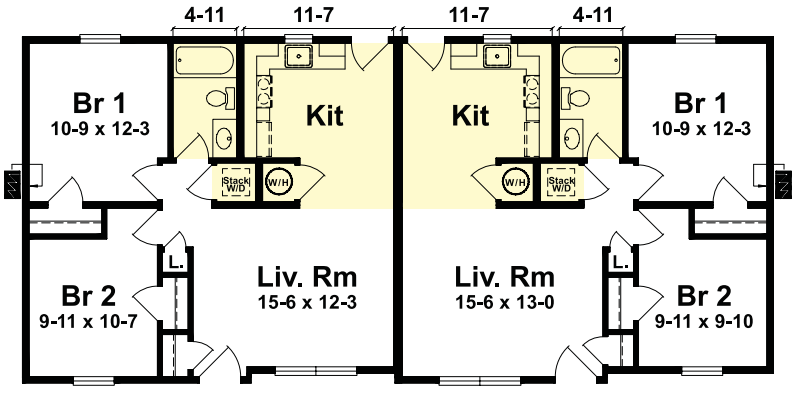
767 SQ. FT. per dwelling 2BR
 1 BATH

THE AUBURN IV DUPLEX
 27'-6" X 58'-0"

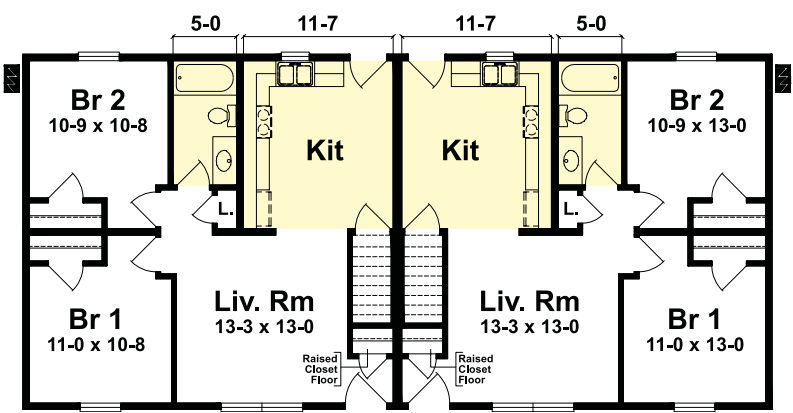
800 SQ. FT. per dwelling 2BR
 1 BATH

DESIGNED FOR FULL BASEMENT OR CRAWL SPACE FOUNDATION

SIMPLEX INDUSTRIES INC.
 KEYSER VALLEY INDUSTRIAL PARK
 1 SIMPLEX DRIVE
 SCRANTON, PA 18504
 (570) 346.5113
 www.simplexhomes.com



AUBURN III

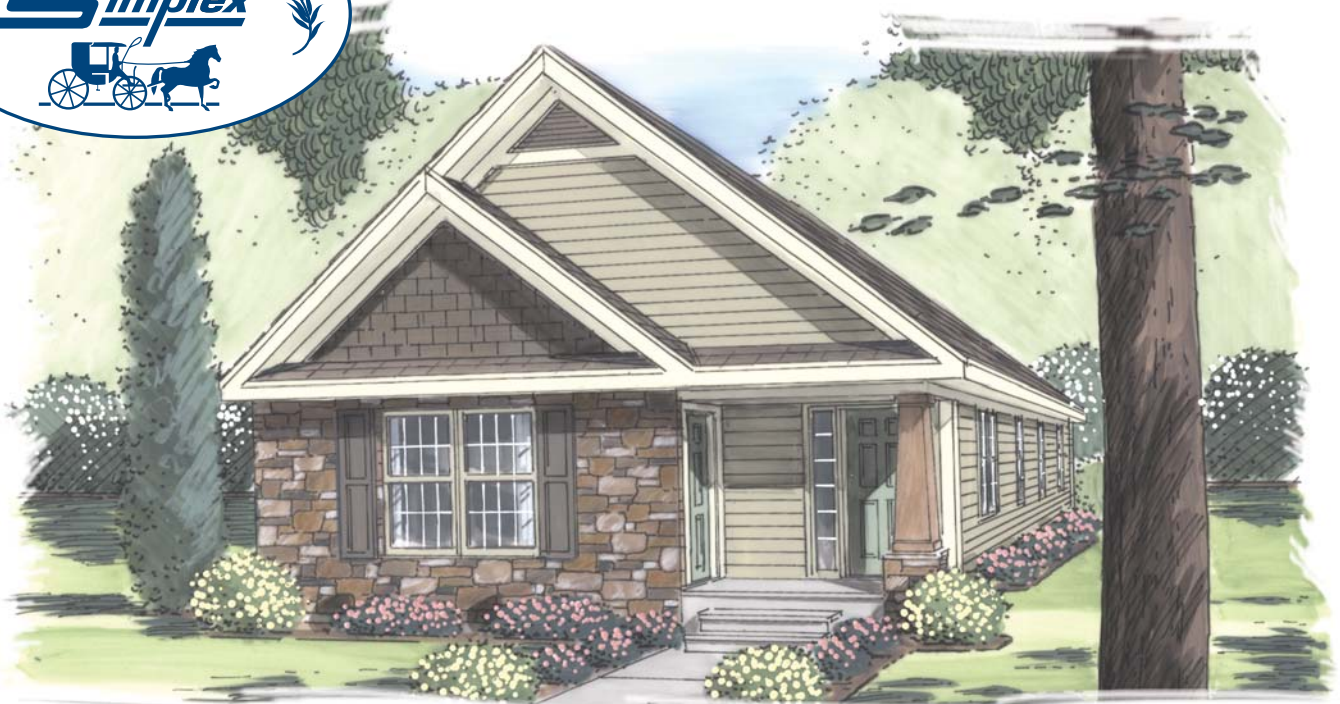


AUBURN IV

= linoleum areas

"Building Homes With You In Mind"

Artist renderings depict typical finished homes and generally include some optional exterior features. Standard specifications and pricing available on request. Specifications may be subject to revision as required by use and location.



ARTIST RENDERING OF THE CANTERBURY **IV** DUPLEX

THE CANTERBURY **IV**

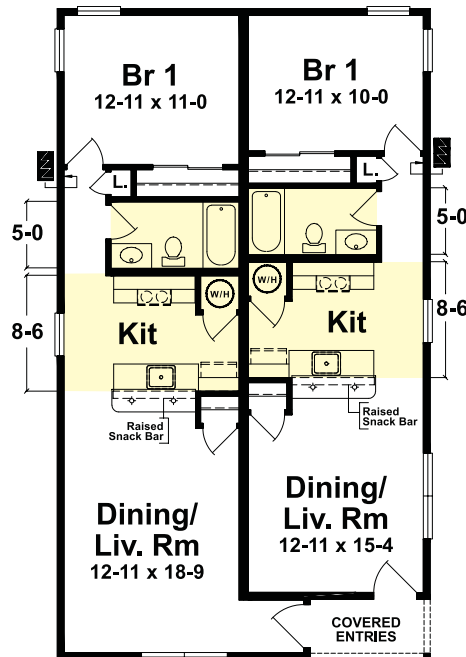
The Canterbury **IV** is highlighted by an optional high pitched roof, shakes, full eave return over front twin window, wide cornerposts, trim boards, decorative grill and side light at front door. The stonework is site supplied and installed.

THE CANTERBURY **IV DUPLEX**
27'-6" X 48'-0"

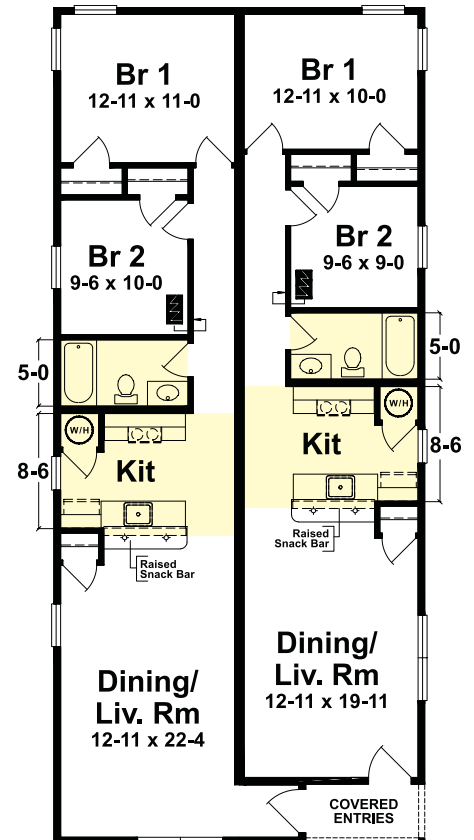
Left Side Plan
682 SQ. FT. **1BR**
Right Side Plan
600 SQ. FT. **1 BATH**

THE CANTERBURY **V DUPLEX**
27'-6" X 62'-0"

Left Side Plan
875 SQ. FT. **2BR**
Right Side Plan
792 SQ. FT. **1 BATH**



CANTERBURY **IV**



CANTERBURY **V**

= linoleum areas

SIMPLEX INDUSTRIES INC.
KEYSER VALLEY INDUSTRIAL PARK
1 SIMPLEX DRIVE
SCRANTON, PA 18504
(570) 346.5113
www.simplexhomes.com



ARTIST RENDERING OF THE CANTERBURY VI DUPLEX

THE CANTERBURY VI

The Canterbury VI is highlighted by an optional high pitch roof, decorative grill, wide cornerposts, decorative trim boards, and side light at front door. The optional Bay window is complimented by site supplied and installed brickwork and porch column. The garage is included but the garage door is site supplied and installed.

**THE CANTERBURY VI DUPLEX
41'-3" X 52'-0"**

**Left Side Plan
966 SQ. FT. 2BR
1 BATH**

**Right Side Plan
655 SQ. FT. 1BR
1 BATH**

**DESIGNED FOR FULL
BASEMENT OR CRAWL
SPACE FOUNDATION**

SIMPLEX INDUSTRIES INC.

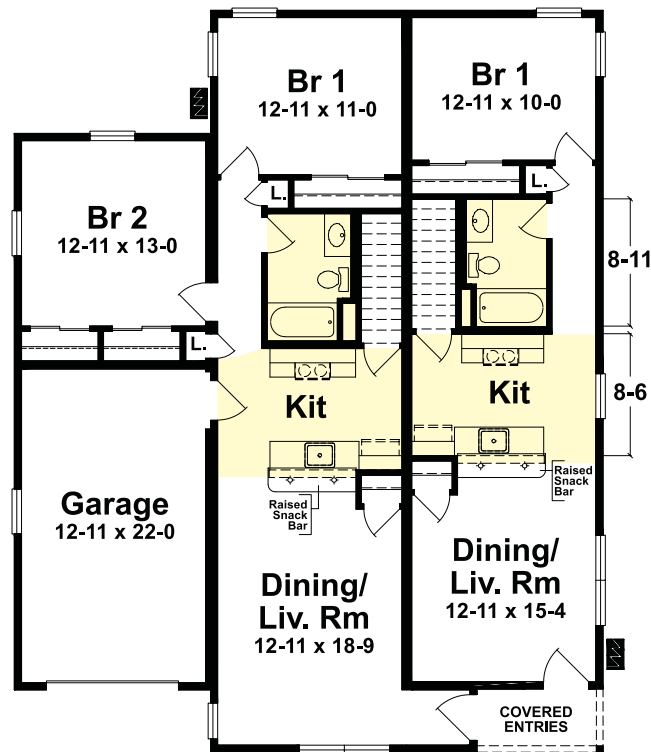
KEYSER VALLEY INDUSTRIAL PARK

1 SIMPLEX DRIVE

SCRANTON, PA 18504

(570) 346.5113

www.simplexhomes.com



CANTERBURY VI

= linoleum areas

"Building Homes With You In Mind"

Artist renderings depict typical finished homes and generally include some optional exterior features. Standard specifications and pricing available on request. Specifications may be subject to revision as required by use and location.



MULTI-FAMILY DIVISION

DUPLEX PLAN RANCH



ARTIST RENDERING OF THE KINGSTON DUPLEX

THE KINGSTON

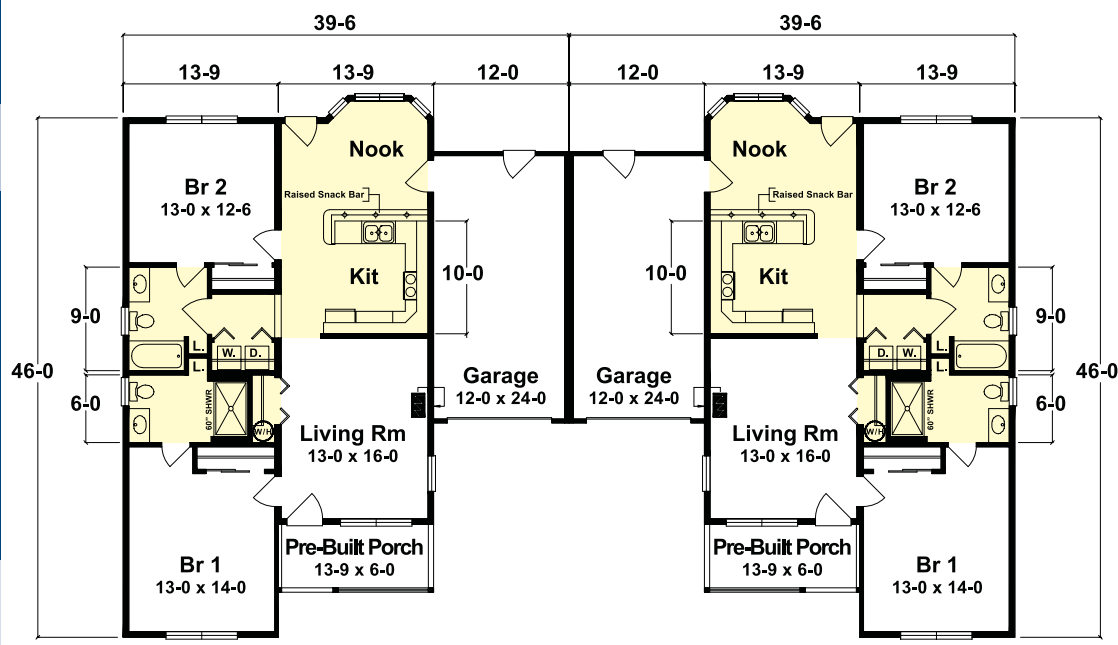
The Kingston Duplex elevation as shown includes a panelized garage and front porch with decking, rails and posts. Window grills, panel shutters and gable shake shingles are optional. The garage door is not included.

THE KINGSTON DUPLEX
27'-6" X 46'-0" X 38'-0"

1143 SQ. FT.
 per dwelling

2BR - 2 BATHS

DESIGNED FOR FULL BASEMENT OR CRAWL SPACE FOUNDATION



FIRST FLOOR

= linoleum areas

"Building Homes With You In Mind"

Artist renderings depict typical finished homes and generally include some optional exterior features. Standard specifications and pricing available on request. Specifications may be subject to revision as required by use and location.

SIMPLEX INDUSTRIES INC.
 KEYSER VALLEY INDUSTRIAL PARK
 1 SIMPLEX DRIVE
 SCRANTON, PA 18504
 (570) 346.5113
 www.simplexhomes.com