



**ARTIST RENDERING OF THE GREENWOOD II TRIPLEX**

**GREENWOOD II**

The Greenwood II as pictured includes an optional high pitched roof with decorative dormers, window grills, mantels, shutters and a decorative door trim at the front entry doors. The porches and brick work are site provided and installed.

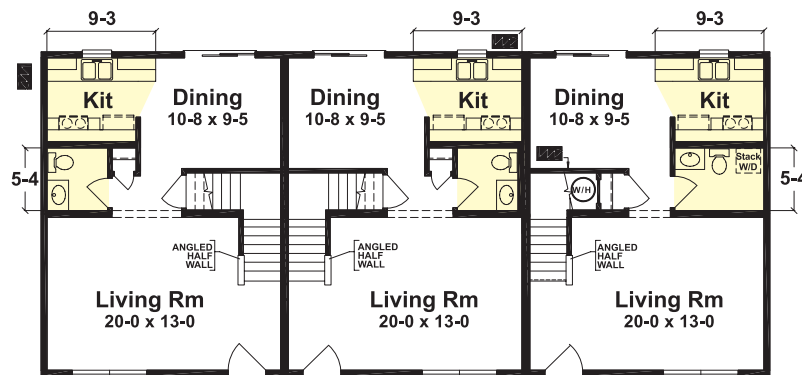
**GREENWOOD II  
TRIPLEX  
27'-6" X 62'-0"**

**1137 SQ. FT.  
per dwelling**

**3 BR - 1 1/2 BATHS**

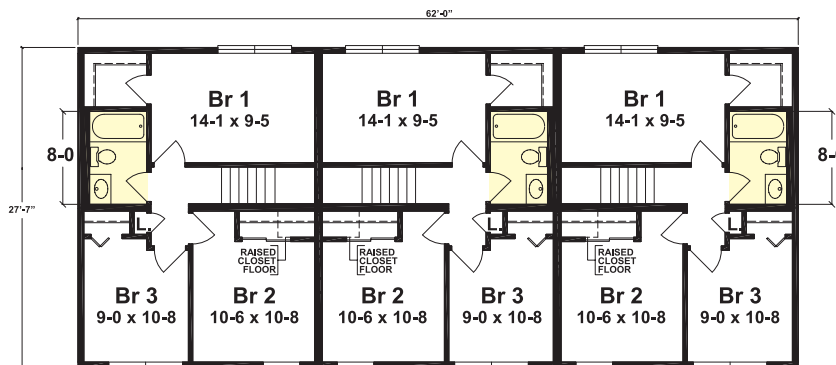
**DESIGNED FOR FULL  
BASEMENT OR CRAWL  
SPACE FOUNDATION**

**SIMPLEX INDUSTRIES INC.**  
KEYSER VALLEY INDUSTRIAL PARK  
1 SIMPLEX DRIVE  
SCRANTON, PA 18504  
(570) 346.5113  
www.simplexhomes.com



**FIRST FLOOR**

*Crawl Space Plan*



**SECOND FLOOR**

= linoleum areas



# MULTI-FAMILY DIVISION

**TRIPLEX PLAN**  
**2 STORY**



ARTIST RENDERING OF THE GETTYSBURG II TRIPLEX

**GETTYSBURG II**

The Gettysburg as pictured includes the dormer projection on each end unit as a standard feature. Optional features include the high pitched roof, full eave returns on dormers, decorative vents, shakes, windows with grills, shutters, mantels, wide cornerposts, decorative trim boards and pilasters and mantles at front door. Please note the entire porch and brick front are site provided and installed.

**GETTYSBURG II TRIPLEX**  
**26'-9" X 60'-4 1/2"**

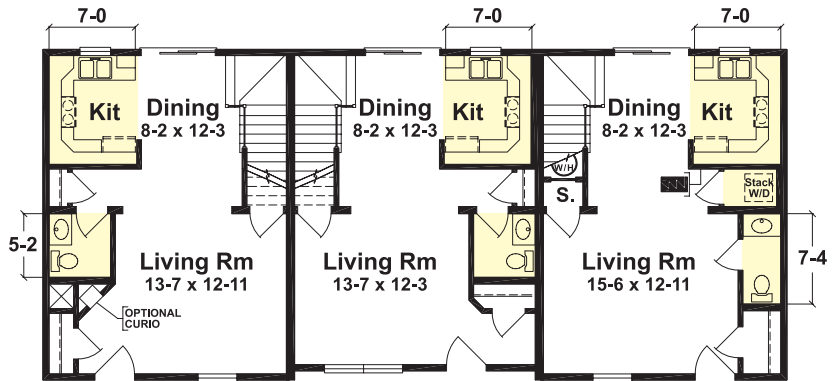
Left Side Plan  
**1086 SQ. FT.**

Middle Plan  
**1056 SQ. FT.**

Right Side Plan  
**1086 SQ. FT.**

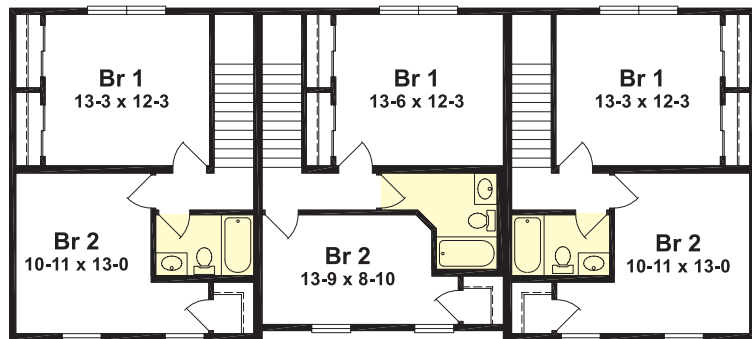
**2 BR - 1 1/2 BATHS**

DESIGNED FOR FULL BASEMENT OR CRAWL SPACE FOUNDATION



**FIRST FLOOR**

*Crawl Space Plan*



**SECOND FLOOR**

= linoleum areas

**SIMPLEX INDUSTRIES INC.**  
KEYSER VALLEY INDUSTRIAL PARK  
1 SIMPLEX DRIVE  
SCRANTON, PA 18504  
(570) 346.5113  
[www.simplexhomes.com](http://www.simplexhomes.com)

**"Building Homes With You In Mind"**

Artist renderings depict typical finished homes and generally include some optional exterior features. Standard specifications and pricing available on request. Specifications may be subject to revision as required by use and location.